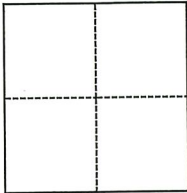


# CORNER RECORD

Agency Index

Document Number

DPW # 19-047

City of San Rafael County of MARIN, CaliforniaBrief Legal Description NAIL AND WASHER SHOWN ON CORNER RECORD DOC NO. 179-311-10b**CORNER TYPE****COORDINATES (Optional)**

- ☐ Government Corner ☒ Control  
☐ Meander ☐ Property  
☐ Rancho ☐ Other

Date of Survey MARCH, 15, 2019

N. \_\_\_\_\_ E. \_\_\_\_\_

Elevation \_\_\_\_\_

Units ☐ Metric ☐ U.S. Survey Foot

Horizontal Datum \_\_\_\_\_

Zone \_\_\_\_\_ Epoch Date \_\_\_\_\_

Vertical Datum \_\_\_\_\_

☐ Complies with Public Resources Code §§8801-8819☐ Complies with Public Resources Code §§8890-8902

PLS Act Ref.:

☐ 8765(d)☒ 8771☐ 8773☐ Other:Corner/  
Monument:☐ Left as found☐ Established☐ Rebuilt☒ Pre-Construction☐ Found and tagged☒ Reestablished☒ Referenced☐ Post-Construction

Narrative of corner identified and monument as found, set, reset, replaced, or removed:

☐ See sheet #2 for description(s):

FOUND MAG NAIL AND WASHER STAMPED MARIN COUNTY SURVEYOR NEAR LOT 43 AS SHOWN ON CORNER RECORD DOCUMENT NUMBER 179-311-10b; SET FOUR REFERENCE TIES; TO BE RE-ESTABLISHED WITH COUNTY OF MARIN WELL MONUMENT PER UCS DWG #300. (SEE ATTACHED SKETCH) NO DETERMINATION WAS MADE AS TO THE VALIDITY OF THE MONUMENT SHOWN HEREON OR ITS RELATION TO PROPERTY LINES IN THE AREA.

**SURVEYOR'S STATEMENT**

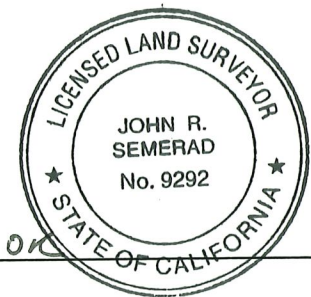
This Corner Record was prepared by me or under my direction in conformance with

the Professional Land Surveyors' Act on

06/20/22

Signed

P.L.S. or R.C.E. No.

9292**COUNTY SURVEYOR'S STATEMENT**

This Corner Record was received

MAY 9, 2019

and examined and filed

6/20/22

Signed

T.K. Park

P.L.S. or R.C.E. No.

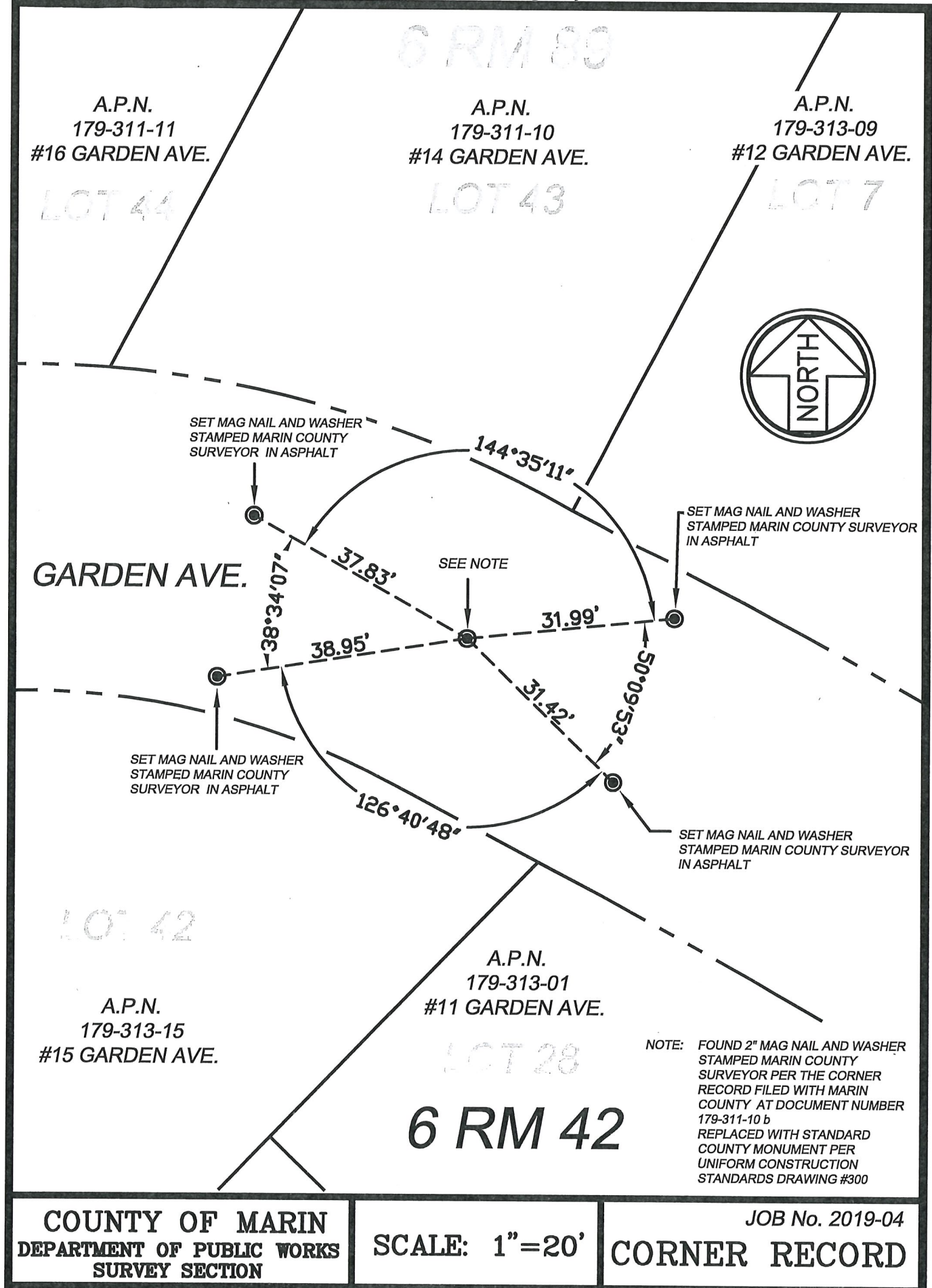
8176

Title

County Surveyor

County Surveyor's Comment





COUNTY OF MARIN  
DEPARTMENT OF PUBLIC WORKS  
SURVEY SECTION

SCALE: 1"=20'

JOB No. 2019-04  
CORNER RECORD